

# PROSTAGE



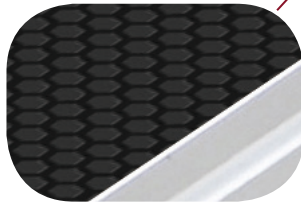
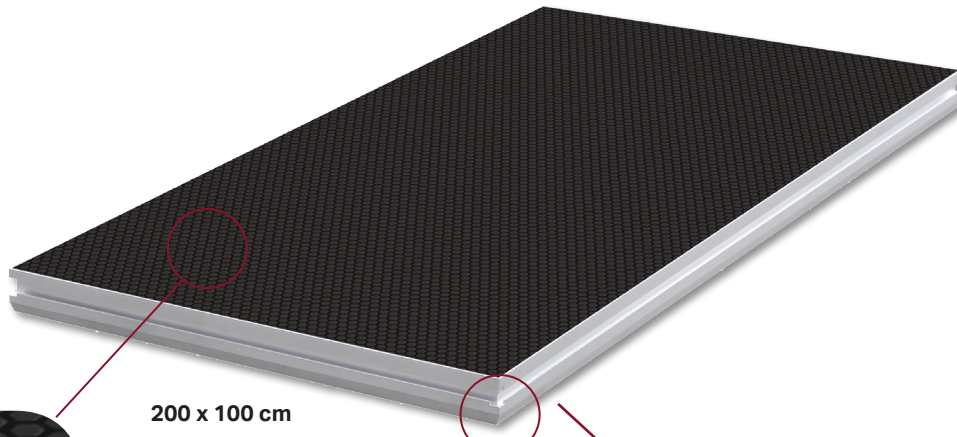
**Kg** Loading Capacity  
**500kg/m<sup>2</sup>**

**BLACK HEXA ANTI-SLIP SURFACE**

**29 KG LIGHTWEIGHT**

**OUTDOOR**

**DURASTAGE**  
PROFESSIONAL CONSTRUCTIONS®



200 x 100 cm



COMPATIBLE WITH ALL 9CM PROFILES

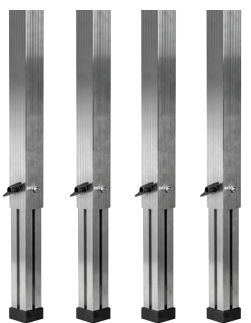


## DS-PROSTAGE 200X100

CODE: 1711000000

200 x 100 cm

## FLEXLEG SQUARE

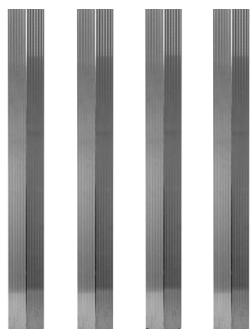


TAPE MEASURE ON EVERY FLEXLEG

- ADJUSTABLE
- TAPE MEASURES ON EVERY LEG
- HIGH DURABILITY
- EASY TO CONNECT

Model	Code
DS-PROSTAGE FLEXLEG Square 40-60cm	1711000027
DS-PROSTAGE FLEXLEG Square 60-100cm	1711000028
DS-PROSTAGE FLEXLEG Square 80-140cm	1711000029

## LEG SET SQUARE



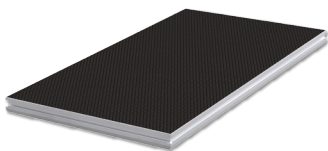
Model	Code
DS-PROSTAGE LEG SET Square 20cm	1711000035
DS-PROSTAGE LEG SET Square 40cm	1711000036
DS-PROSTAGE LEG SET Square 60cm	1711000037
DS-PROSTAGE LEG SET Square 80cm	1711000038
DS-PROSTAGE LEG SET Square 100cm	1711000039

A solid base for your performance DuraStage PRO-Stage platforms from DuraTruss are both lightweight and solid. With a TÜV-tested loading capacity of 500kg/m<sup>2</sup> (tested under ISO EN 14122), they are strong enough to bear massive loads for any kind of performance. The stages are designed to be used both as touring stages and in permanent installations. The universal aluminum profile with the module clamps allows for setup in seconds and the adjustable legs level any unevenness in the floor by the simple turn of a screw. The black anti-slip hexagon style surface is permanently waterproof to allow for outdoor use as well.

# PROSTAGE

## DS-PROSTAGE 200X100

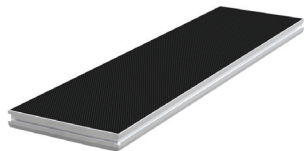
CODE: 1711000000



200 x 100 cm

## DS-PROSTAGE 200X50

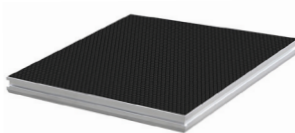
CODE: 1711000002



200 x 50 cm

## DS-PROSTAGE 100X100

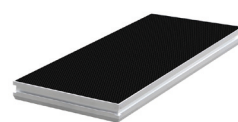
CODE: 1711000001



100 x 100 cm

## DS-PROSTAGE 100X50

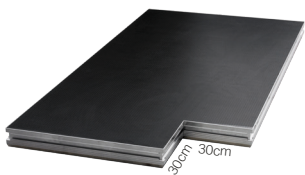
CODE: 1711000003



100 x 50 cm

## DS-PROSTAGE 200X100 TRUSSCUT LEFT

CODE: 1711000058



200 x 100 cm trusscut - left

## DS-PROSTAGE 200X100 TRUSSCUT RIGHT

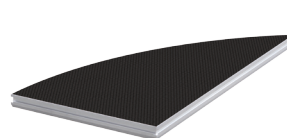
CODE: 1711000007



200 x 100 cm trusscut - right

## DS-PROSTAGE 200X100 ROUND LEFT

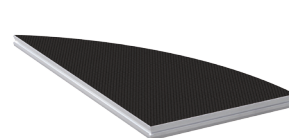
CODE: 1711000057



200 x 100 cm round - left

## DS-PROSTAGE 200X100 ROUND RIGHT

CODE: 1711000059



200 x 100 cm round - right

## DS-PROSTAGE 100X100 ROUND

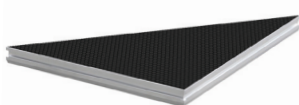
CODE: 1711000004



100 x 100 cm - round

## DS-PROSTAGE 100X100 TRIANGLE

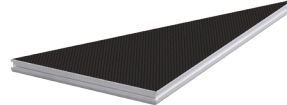
CODE: 1711000005



100 x 100 cm - triangle

## DS-PROSTAGE 200X100 TRIANGLE L

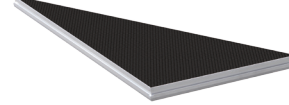
CODE: 1711000006



200 x 100 cm triangle - left

## DS-PROSTAGE 200X100 TRIANGLE R

CODE: 1711000060



200 x 100 cm triangle - right

## DS-RAIL TROLLEY

CODE: 1711000044



## DS-STAGE TROLLEY

CODE: 1711000043



## DS-PROSTAGE WHEEL LEG 40

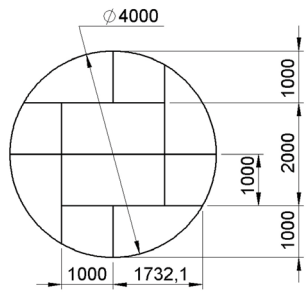
CODE: 1711000040



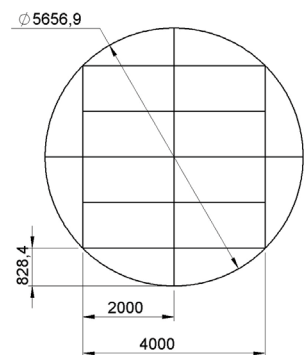
height incl. wheel: 40cm. Supplied with Blue Wheel



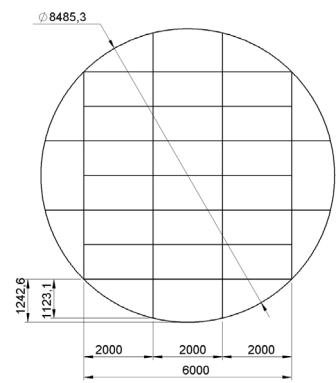
### DS-PROSTAGE CIRCLE 4M



### DS-PROSTAGE CIRCLE 5,5M



### DS-PROSTAGE CIRCLE 8,5M



#### Part list:

Model
2x DS-PROSTAGE 200x100 Code: 1711000000
4x DS-PROSTAGE Circle 4m Part1 Code: 1711000050
4x DS-PROSTAGE Circle 4m Part2 Code: 1711000051

#### Part list:

Model
8x DS-PROSTAGE 200x100 Code: 1711000000
4x DS-PROSTAGE Circle 5,5m Part1 Code: 1711000052
4x DS-PROSTAGE Circle 5,5m Part2 Code: 1711000053

#### Part list:

Model
18x DS-PROSTAGE 200x100 Code: 1711000000
4x DS-PROSTAGE Circle 8,5m Part1 Code: 1711000054
4x DS-PROSTAGE Circle 8,5m Part2 Code: 1711000055
4x DS-PROSTAGE Circle 8,5m Part3 Code: 1711000056

### DS-STAIR 2040

CODE: 1711000017



1st step 20cm, 2nd step 40cm

### DS-STAIR 60

CODE: 1711000018



3th step 60cm

### DS-STAIR 80

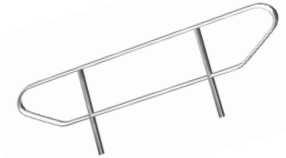
CODE: 1711000019



4th step 80cm

### DS-PROSTAGE STAIRRAIL

CODE: 1711000012



DS-ProStage Stairrail is the perfect Rail for all DS-Stairs. It fits to all Flex Stair except DS-Prostage Flexstair 40-60.

### DS-PROSTAGE FLEXSTAIR 40-60

CODE: 1711000008



Flexstairs (40cm - 60cm)

### DS-PROSTAGE FLEXSTAIR 60-100

CODE: 1711000009



60-100cm  
DS-PROSTAGE STAIRRAIL (1711000012) not included!

### DS-PROSTAGE FLEXSTAIR 80-140

CODE: 1711000010



80-140cm  
DS-PROSTAGE STAIRRAIL (1711000012) not included!

### DS-PROSTAGE FLEXSTAIR 100-180

CODE: 1711000011



100-180cm  
DS-PROSTAGE STAIRRAIL (1711000012) not included!

# PROSTAGE

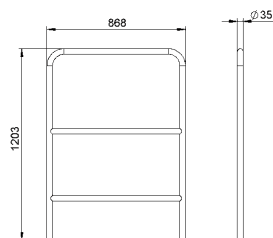


## DS-PROSTAGE STAGERAIL 100

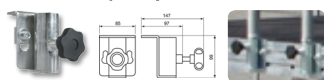
CODE: 1711000013



Stagerail 100  
120,3cm x 868cm



Waga: 2.83kg



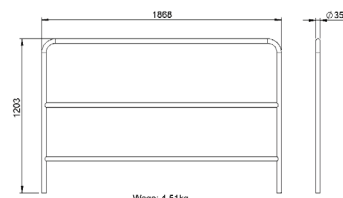
STAGERAIL including:  
PROSTAGE STAGERAIL ADAPTER

## DS-PROSTAGE STAGERAIL 200

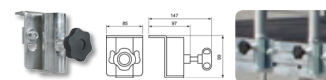
CODE: 1711000014



Stagerail 200  
120,3cm x 1868cm



Waga: 4.51kg



STAGERAIL including:  
PROSTAGE STAGERAIL ADAPTER

## DS-PROSTAGE STAGERAIL CLAMP

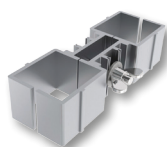
CODE: 1711000015



Clamp for  
DS-PROSTAGE STAGERAIL 100 and  
DS-PROSTAGE STAGERAIL 200

## DS-PROSTAGE LEGCLAMP DUO

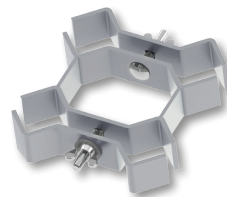
CODE: 1711000041



Legclamp duo

## DS-PROSTAGE LEGCLAMP QUAD

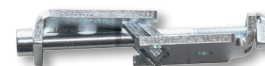
CODE: 1711000042



Legclamp quad

## DS-PROSTAGE CONNECTOR

CODE: 1711000021



Connector

## DS-PROSTAGE STAGECLAMP

CODE: 1711000020



STAGECLAMP

## DS-PROSTAGE LEVELER

CODE: 1711000022



LEVELER

Mounting example:

